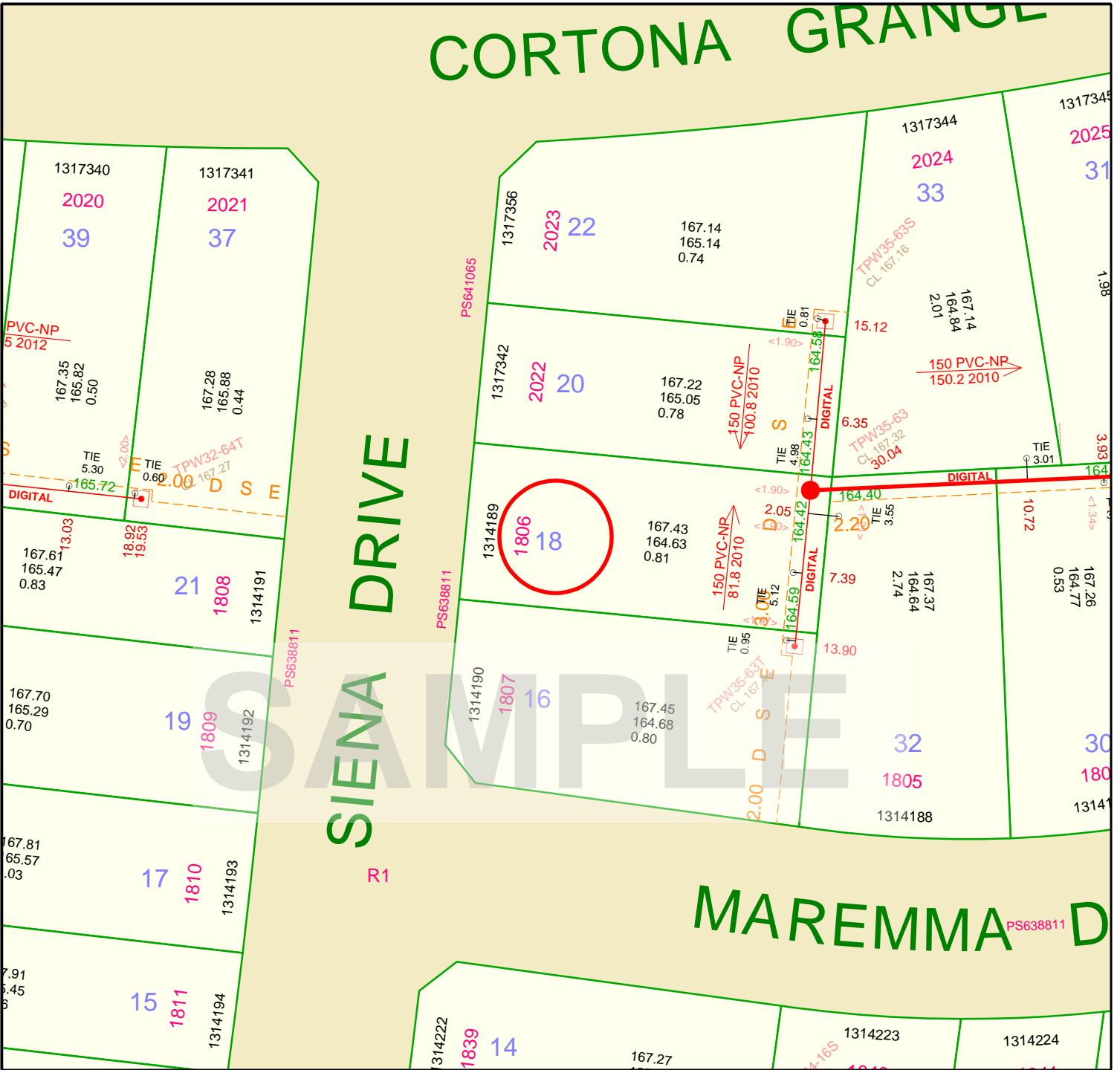


CORTONA GRANGE



Yarra Valley Water Sewerage Depth Offset Asset Map

Address

Date	19/09/2016
Scale	500



Disclaimer: This Sewerage Depth Offset Plan is for property information only. Yarra Valley Water does not warrant the accuracy or scale of this plan. The company accepts no liability for any loss, damage or injury suffered by any person as a result of an inaccuracy in this plan.

ABN 93 066 902 501

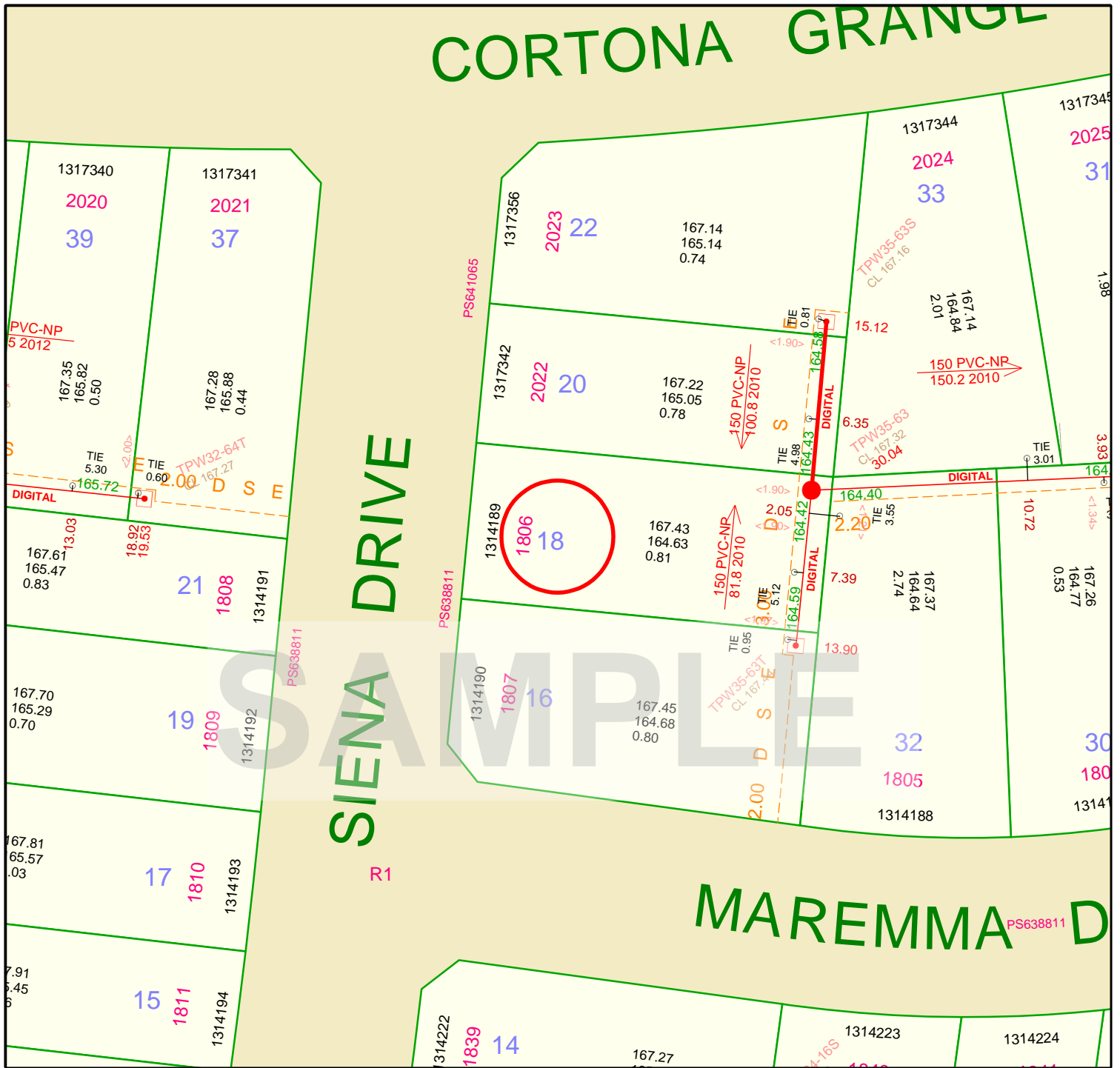
Existing Title	
Proposed Title	
Access Point Number	
Sewer Pipe Flow	
Existing Sewer	
Change of Grade	

Circular Access Point	
Offset Distance	
Square Manhole	
End of Pipe	
Maintenance Shaft	
Inspection Shaft	
Pump Station	
Ventilation	

Abbreviation Pipe Material	
VC	VITREOUS CLAY
PVC-NP	UPVC - Non Pressure
PVC-PW	UPVC - Profile Wall
CONC	CONCRETE
RC/UCON	CC Re/Un-reinforced
PP_SW	POLYPROYLENE
HDPE	POLYETHYLENE
CI	CAST IRON

ASSET DETAILS
Pipe Size: 150
Pipe Material: PVC-NP
Average Depth (m): 2.97
Branch Length (m): 0.81
Note: Offsets denoted in brackets < > are from the title boundary to centreline of pipe.
If pipe offset is not shown, it is unknown and will need to be proven on site.
YVW Ref: 5030928

CORTONA GRANGE



Yarra Valley Water Sewerage Depth Offset Asset Map

Address

Date	19/09/2016
Scale	500



Disclaimer: This Sewerage Depth Offset Plan is for property information only. Yarra Valley Water does not warrant the accuracy or scale of this plan. The company accepts no liability for any loss, damage or injury suffered by any person as a result of an inaccuracy in this plan.

ABN 93 066 902 501

Existing Title	
Proposed Title	
Access Point Number	
Sewer Pipe Flow	
Existing Sewer	
Change of Grade	

Circular Access Point	
Offset Distance	
Square Manhole	
End of Pipe	
Maintenance Shaft	
Inspection Shaft	
Pump Station	
Ventilation	

Abbreviation Pipe Material	
VC	VITREOUS CLAY
PVC-NP	UPVC - Non Pressure
PVC-PW	UPVC - Profile Wall
CONC	CONCRETE
RC/UCON	CC Re/Un-reinforced
PP_SW	POLYPROPYLENE
HDPE	POLYETHYLENE
CI	CAST IRON

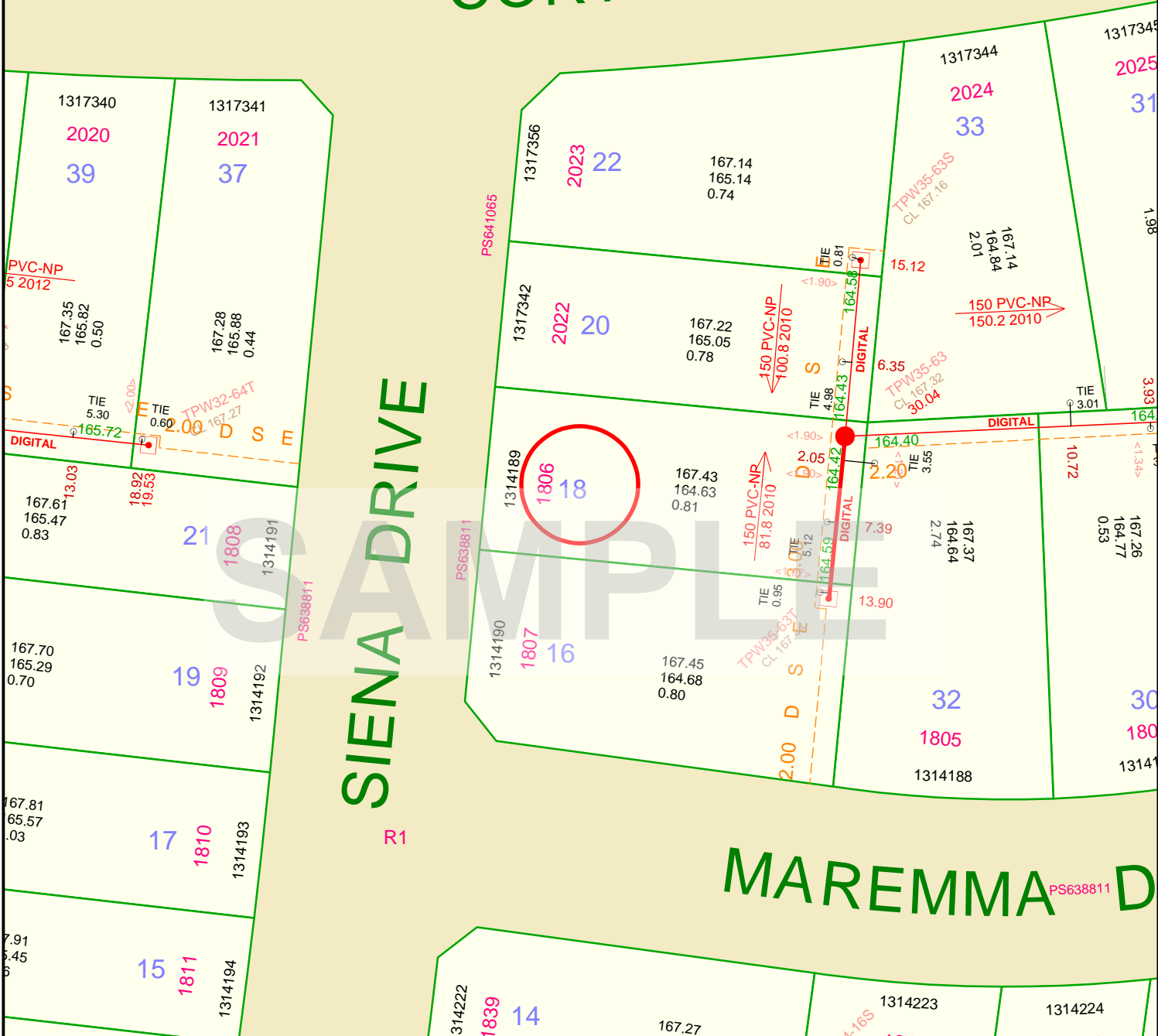
ASSET DETAILS

Pipe Size: 150
Pipe Material: PVC-NP
Average Depth (m): 2.74
Branch Length (m): 0.81

Note: Offsets denoted in brackets < > are from the title boundary to centreline of pipe.
 If pipe offset is not shown, it is unknown and will need to be proven on site.

YVW Ref: 5030928

CORTONA GRANGE



SIENA DRIVE

MAREMMA DRIVE

Yarra Valley Water Sewerage Depth Offset Asset Map

Address

Date	19/09/2016
Scale	500



Disclaimer: This Sewerage Depth Offset Plan is for property information only. Yarra Valley Water does not warrant the accuracy or scale of this plan. The company accepts no liability for any loss, damage or injury suffered by any person as a result of an inaccuracy in this plan.

ABN 93 066 902 501

Existing Title	
Proposed Title	
Access Point Number	
Sewer Pipe Flow	
Existing Sewer	
Change of Grade	

Circular Access Point	
Offset Distance	
Square Manhole	
End of Pipe	
Maintenance Shaft	
Inspection Shaft	
Pump Station	
Ventilation	

Abbreviation Pipe Material	
VC	VITREOUS CLAY
PVC-NP	UPVC - Non Pressure
PVC-PW	UPVC - Profile Wall
CONC	CONCRETE
RC/UCON	CC Re/Un-reinforced
PP_SW	POLYPROYLENE
HDPE	POLYETHYLENE
CI	CAST IRON

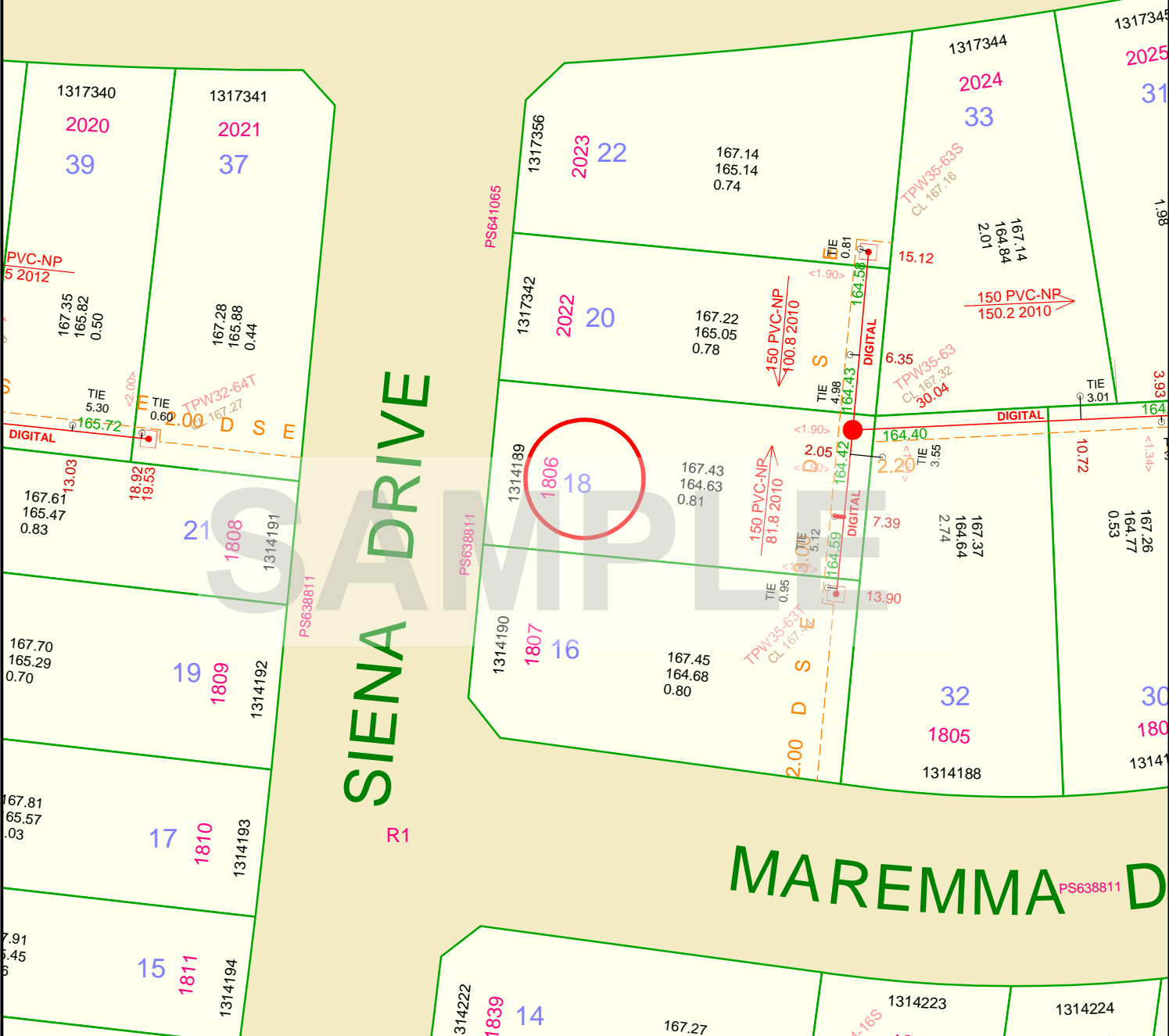
ASSET DETAILS

Pipe Size: 150
Pipe Material: PVC-NP
Average Depth (m): 2.88
Branch Length (m): 0.81

Note: Offsets denoted in brackets < > are from the title boundary to centreline of pipe.
 If pipe offset is not shown, it is unknown and will need to be proven on site.

YVW Ref: 5030928



CORTONA GRANGE



Yarra Valley Water Sewer Branch Asset Map


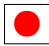
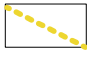





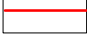


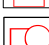

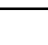
Address

Date	19/09/2016
Scale	500

Disclaimer: This Sewerage Branch Plan is for property information only. Yarra Valley Water does not warrant the accuracy or scale of this plan. The company accepts no liability for any loss, damage or injury suffered by any person as a result of an inaccuracy in this plan.

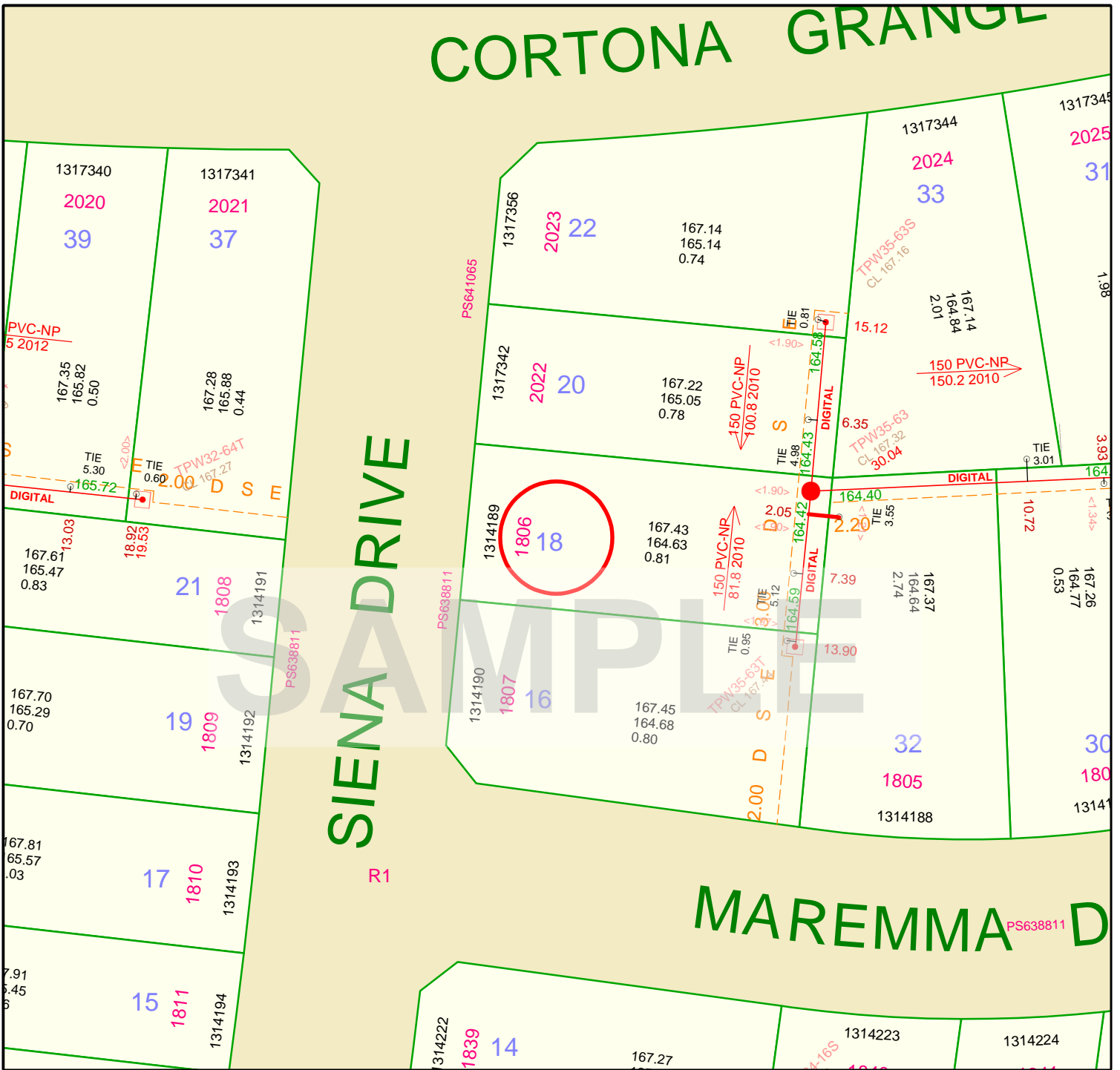
ABN 93 066 902 501



Existing Title		Circular Access Point		Abbreviation Pipe Material VC VITREOUS CLAY PVC-NP UPVC - Non Pressure PVC-PW UPVC - Profile Wall CONC CONCRETE RC/UCONCC Re/Un-reinforced PP_SW POLYPROYLENE HDPE POLYETHYLENE CI CAST IRON	ASSET DETAILS Branch Size: 100 Branch Material: PVC-NP Branch Depth (m): 2.8 Branch Length(m)0.81	
Proposed Title		Offset Distance				
Access Point Number		Square Manhole				
Sewer Pipe Flow		End of Pipe				
Existing Sewer		Maintenance Shaft				
Change of Grade		Inspection Shaft				
		Pump Station				
		Ventilation				
Note: Offsets denoted in brackets < > are from the title boundary to centreline of pipe. YVW Ref: 5030928						

CORTONA GRANGE



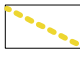








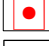

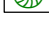
SIENA DRIVE

MAREMMA DRIVE



Yarra Valley Water Sewer Branch Asset Map	Address	Date	19/09/2016		
		Scale	500		

Disclaimer: This Sewerage Branch Plan is for property information only. Yarra Valley Water does not warrant the accuracy or scale of this plan. The company accepts no liability for any loss, damage or injury suffered by any person as a result of an inaccuracy in this plan.

Existing Title 	Circular Access Point 	Abbreviation Pipe Material VC VITREOUS CLAY PVC-NP UPVC - Non Pressure PVC-PW UPVC - Profile Wall CONC CONCRETE RC/UCONCC Re/Un-reinforced PP_SW POLYPROYLENE HDPE POLYETHYLENE CI CAST IRON	ASSET DETAILS Branch Size: 100 Branch Material: PVC-NP Branch Depth (m): 2.73 Branch Length(m) 2.74
Proposed Title 	Offset Distance 		
Access Point Number 	Square Manhole 		
Sewer Pipe Flow 	End of Pipe 		
Existing Sewer 	Maintenance Shaft 		
Change of Grade 	Inspection Shaft 		
	Pump Station 		
	Ventilation 		

Note: Offsets denoted in brackets < > are from the title boundary to centreline of pipe.
YVW Ref: 5030928